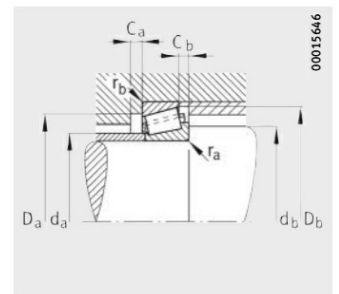
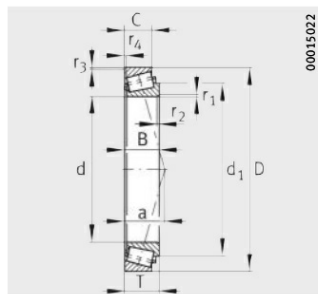
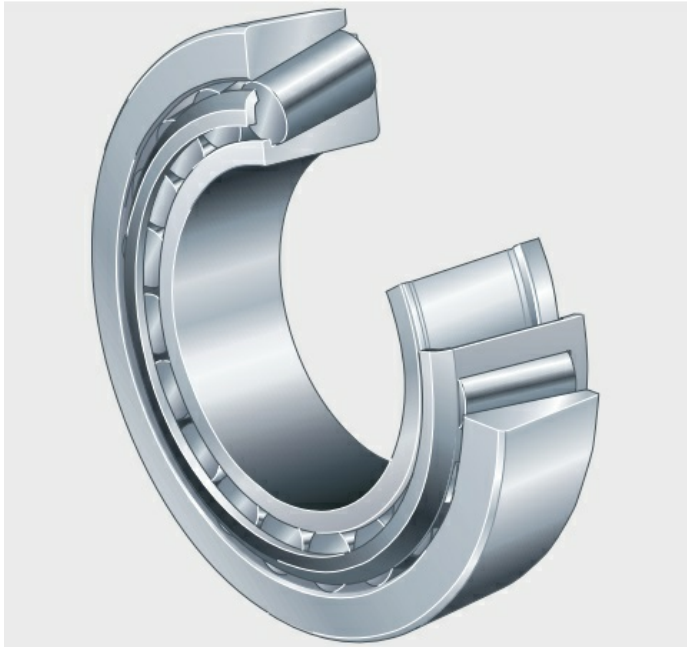


KLM603049-LM603011

Single Row Tapered roller bearings, separable, adjusted or in pairs



Mounting dimensions

Technical sheet of KLM603049-LM603011

What are the Benefits of choosing KLM603049-LM603011 bearings?

- **High load-bearing capacity:** Capable of simultaneously withstanding high radial and unidirectional axial loads (combined loads).
- **Easy installation:** The inner ring (with roller cage) and outer ring are separable, simplifying installation, disassembly, and adjustment.
- **Good adaptability:** Imperial dimensions facilitate compatibility with imperial fittings, suitable for medium-to-low speed, heavy-duty applications.
- **Precision and rigidity:** Provides high rigidity, ensuring precise positioning and stable operation of the transmission system.

Type :	Single row inch tapered roller bearings	
Model :	KLM603049-LM603011	
Main demensions :	45.242 mm x 77.788 mm x 19.842 mm	Bore Dia x Outside Dia x Width Dia
M kg:	0.37	Mass
HS Code :	8482200000	Bearing customs code
d mm:	45.242	inner ring diameter
D mm:	77.788	Outer ring diameter

B(T) mm:	19.842	Overall Width
Cr kN:	54.912	Radial dynamic load rating
C_{0r} kN:	68.86	Radial static load rating
Grease r/min:	5781	Reference speed
Oil r/min:	9238	Limiting speed

Detailed parameters and installation dimensions:

Part Number	KLM603049-LM603011
Seal	Open
Accuracy class	ABMA4 (Class 4)
Series	K series (KLM6030..)
Reference speed - n_B	5781 min ⁻¹
Limiting speed - n_G	9238 min ⁻¹
Quality Class	Standard
Bearing Mass - m	0.37 kg 0.816 lb
Dimension Inside - d ϕ	45.242 mm 1.781 inch
Dimension Outside - D Φ	77.788 mm 3.063 inch
Dimension Thickness - T	19.842 mm 0.781 inch
Internal_design	Standard
Heat treatment	Standard
Fatigue Radial Capacity - C _{ur}	8372 N 1882 lbf
Dimension Cone - B	19.842 mm 0.781 inch
Dimension Cup - C	15.08 mm 0.594 inch
Equivalent	KLM603049.LM603011
Cage	Stamping steel, roller-guided
Dimension - r ₁ , r ₂ (min.)	3.6 mm 0.142 inch
Dimension - r ₃ , r ₄ (min.)	0.8 mm 0.031 inch
Dimension - a	18 mm 0.709 inch
Dimension - d ₁	61.7 mm 2.429 inch
Rows NO.	One
Mounting dimensions - d _a (max.)	52 mm 2.047 inch
Mounting dimensions - d _b (min.)	58 mm 2.283 inch
Bore Type	Z = cylindrical bore
Roller Material	GCr15SiMn
Mounting dimensions - D _a (min.)	71 mm 2.795 inch
Mounting dimensions - D _b (min.)	74 mm 2.913 inch
Temperature - T(min)	-30 °C
Temperature - T(max)	120 °C
Units	inch
Manufacturer Part Code	KLM603049/LM603011
Dynamic Radial Capacity - C _r	54912 N 12344 lbf
Static Radial Capacity - C _{0r}	68860 N 15479 lbf

Calculation coefficient - e	0.43
Bearing Type	Single Row Tapered roller bearings, separable, adjusted or in pairs
Mounting dimensions - C _a (min.)	3 mm 0.118 inch
Mounting dimensions - C _b (min.)	4.5 mm 0.177 inch
Mounting dimensions - r _a (max.)	3.6 mm 0.142 inch
Mounting dimensions - r _b (max.)	0.8 mm 0.031 inch
Ring Material	GCr15SiMn
Calculation coefficient - Y	1.41
Calculation coefficient - Y ₀	0.77

What are the applications of the KLM603049-LM603011 bearing?

- **Automotive and Vehicle Engineering**
- **Wheel Hubs (Front and Rear Wheels):** Bears combined loads, adapts to rapid acceleration/deceleration conditions, and ensures driving stability.
- **Transmissions and Differentials:** High rigidity, precise axial positioning, reduces noise and vibration, and improves shift smoothness.
- **Industrial Transmission Equipment**
- **Gearboxes and Drives:** Transmits large radial and unidirectional axial loads, with rated loads more than 35% higher than conventional bearings.
- **Mining and Metallurgical Machinery:** Impact resistant, heavy-duty, adaptable to harsh and dusty environments, and extends equipment maintenance cycles.
- **Engineering and Agricultural Machinery**
- **Agricultural Machinery Reduction Gear:** Separable design facilitates installation and maintenance, adaptable to low-speed, heavy-load conditions.
- **Engineering Machinery Transmission Systems:** Uses stamped steel cages, optimizes costs, and meets reliability requirements for low- and medium-speed scenarios.

Tradebearing(TBS): <https://en.tradebearings.com/>

Email: admin@tradebearings.com

Whatsapp/Mob.: +86 15906428604